

FREEHOLD



House - Terraced

**HUNTSMANS WAY, RUSHEY MEAD,
LEICESTER, LE4 7ZG**

£225,000

FEATURES

- Upgrading Works Required
- Entrance Porch
- Lounge
- Kitchen
- Downstairs Shower Room
- Three Bedrooms
- Master Bedroom With En-Suite
- Rear Garden



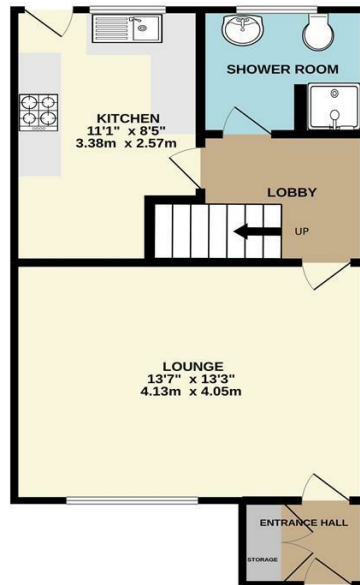
3 Bedroom House - Terraced located in Leicester

*** UPGRADING WORKS REQUIRED - IDEAL FOR FIRST TIME BUYERS & INVESTORS *** Mid town house situated in the much sought area of Rushey Mead.

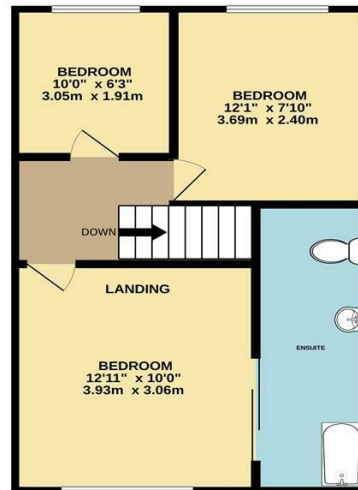
Briefly the accommodation comprises, entrance porch, lounge, kitchen / diner, GROUND FLOOR SHOWER ROOM, three bedrooms and a UPSTAIRS BATHROOM. The property benefits from front & rear gardens and A SINGLE GARAGE LOCATED IN THE BLOCK.

*** NO CHAIN ***

GROUND FLOOR



1ST FLOOR



Whilst every attempt has been made to ensure the accuracy of the floorplan contained here, measurements of doors, windows, rooms and any other items are approximate and no responsibility is taken for any error, omission or mis-statement. This plan is for illustrative purposes only and should be used as such by any prospective purchaser. The services, systems and appliances shown have not been tested and no guarantee as to their operability or efficiency can be given.
Made with Metropix ©2022

Call us on
0116 266 9977

sales@seths.co.uk
www.seths.co.uk

Council Tax Band
B

Energy Efficiency Rating		Current	Potential
<i>Very energy efficient - lower running costs</i>			
(92 plus) A			87
(81-91) B			
(69-80) C		71	
(55-68) D			
(39-54) E			
(21-38) F			
(1-20) G			
<i>Not energy efficient - higher running costs</i>			
England & Wales		EU Directive 2002/91/EC	

Agents Note: Whilst every care has been taken to prepare these particulars, they are for guidance purposes only. All measurements are approximate and are for general guidance purposes only and whilst every care has been taken to ensure their accuracy, they should not be relied upon and potential buyers are advised to recheck the measurements.

